

BUFFALO VALLEY LUTHERAN PARISH NEWS

OCTOBER 2023

PASTOR'S PARAGRAPHS

Grace and peace to you,

He replied, "It is not for you to know the times or periods that the Father has set by his own authority. But you will receive power when the Holy Spirit has come upon you; and you will be my witnesses in Jerusalem, in all Judea and Samaria, and to the ends of the earth."—Acts 1:7-8

We may not be witnesses in Jerusalem or to the ends of the earth, but you all have been witnesses to Jesus Christ in our little corner of central Pennsylvania. Even in the midst of all the tragedy our communities have faced this summer, the Holy Spirit has been working in and through every one of you! You have been a part of caring for those in need in our communities by ensuring everyone has food to eat. You have been praying for and checking in on each other, praying for those who are still struggling with the loss of Joslyn and those who have been asking why.

As I wrap my head around everything that has been happening in our small part of the world, I feel so blessed to be a part of this community. I told someone the other day that I may not live in this community, but this is still my community. Children that I talked to at the school who were mourning the loss of a friend now come up to me and say "hi" when I see them at the Weis store. I do not know when our community will return to normal; I pray that it is soon. As a community of faith, I give you these words, "Faith doesn't always take you out of the problem, Faith takes you through the problem. Faith doesn't always take away the pain, Faith gives you the ability to handle the pain. Faith doesn't always take you out of the storm, Faith calms you in the midst of the storm."

May the Holy Spirit guide and direct us in everything we say and do! May the Holy Spirit guide us to new ministries and new opportunities!

Peace in Christ,
Rev. Curt Wingert



OCTOBER IS PASTOR APPRECIATION MONTH

Pastors and their families live under incredible pressures. Their lives are played out in a fishbowl, with the entire congregation and community watching their every move. They are expected to have ideal families, to be perfect people, to always be available, to never be down and to have all the answers we need to keep our own lives stable and moving forward. Those are unrealistic expectations to place on anyone, yet most of us are disappointed when a pastor becomes overwhelmed, seems depressed, lets us down or completely burns out. That's why God has instructed us to recognize His servants.

"Now we ask you, brothers, to respect those who work hard among you, who are over you in the Lord and who admonish you. Hold them in the highest regard in love because of their work..."
(1 Thessalonians 5:12-13)

Every Christian needs encouragement, and pastors are no exception. Because he is used by God to bless and encourage you, it's important that you do the same for him.

Clergy Appreciation Month is a special time that congregations set aside each year to honor their pastors and pastoral families for the hard work, sacrificial dedication and multiple blessings provided by these special people. It is also important to remember that appreciation, affirmation, and prayer support of our spiritual leaders is appropriate throughout the entire year.

We encourage you to make a special effort to let Pastor Curt know he is deeply appreciated, not just in October, but all year through.

PASTOR APPRECIATION PRAYER
by Rev. Frank Schaefer

Almighty and ever-gracious God,
We give you thanks for Pastor Curt.
You have appointed him to be our Shepherd;
to minister to our spiritual needs
to reach the lost souls in our community,
to prayerfully guide and tend to our church/fellowship.

We realize that the tasks of a pastor are demanding
His job is never done.
He listens, cares, and prays for us, encourages, and teaches us
and reaches out to those in need of help and salvation.
We give you thanks, O Lord, for our pastor.

We pray that you would strengthen and empower him.
We pray that you would bless him and his family,
and that you would keep them out of harm's way.

May you keep him from temptations and negativity.
May the joy of the Lord always remain in his heart;
Amen.

BIBLE STUDY

This month's Bible study will take place at First Lutheran as follows:

Mondays at 1:30 pm

October 2

October 9

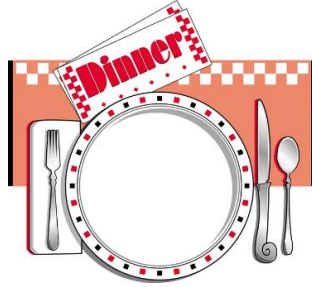
October 16

October 23

October 30



We are studying the Book of Romans. All are welcome.



SENIOR MEMBER DINNER

Inside every older person is a younger person wondering what the heck happened?

If you were born in or prior to 1961, you, along with a guest, are invited to attend the annual Parish Senior Member Dinner on **Sunday, October 29, at 1:00 p.m.** at Christ's United.

Reservations would be very helpful to us in planning the meal. Please reserve in order for the cooks to prepare enough food. Just fill out the attached and return it to the church office by **October 22.**

Mark your calendars and plan to be present for a yummy meal and first-rate fellowship.

SENIOR MEMBER DINNER
October 29, 2023 - 1:00 p.m.

Number of reservations _____

Signed _____

Telephone _____

(Return by October 22)

HELP NEEDED



I pray you all are doing well. I am seeking volunteers to help with a video project I am working on. For this project, I will ask you two easy questions in advance. Then I want to record you answering those two questions and post the video on social media. If you are interested in participating, please let me

know! ~ Peace, Pastor Curt

PARISH NEWS

Texting Program for the Parish

I am going to be trying a new texting program for the parish called Text in Church. With this program, I will be able to send out mass/individual text messages to church members reminding them that church services have changed, share upcoming events, notify that church has been cancelled due to weather, remind committees of meetings, prayer requests, etc.

I am going to do a two-month trial to see how we like it and then I will make a decision if we would like to keep it. If you would like to sign up for this program, please email/call me with your cell phone number. Also, if you do sign up, the text messages that you receive will come from the following number: 814-527-3720. ~ Pastor Curt

Christmas Season Services

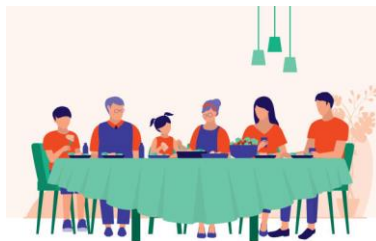
This year December 24 falls on a Sunday. Morning worship service times and locations have not been finalized. However, the Christmas Eve services will be held as follows:

4:00 p.m. ~ Christ's United

7:00 p.m. ~ First Lutheran

10:00 p.m. ~ First Lutheran

December 31 - Lessons and Carols - 10:00 a.m. ~ First Lutheran



UPCOMING MEALS

Free Community Meal at FIRST

First Lutheran will be serving a free community meal on **Saturday, October 7, from 11–12:30**. All are welcome! Please enter the door in the alley behind the church. Upcoming meals for the remainder of the year will be held on **November 4**, and **December 2**.



Pot Pie

A “Drive Through” Pot Pie ‘Quart Only’ Sale is planned for Saturday, November 4 at Christ’s United. The time is 3:30 p.m. until sold out. Advance orders will also be taken. Please check our website at www.4bellschurch.com. The cost is \$10.00 per quart.

A workday will take place on Friday, November 3, starting at 9 a.m. Please come out on Friday to help peel and cut potatoes, mix broth, prepare meat, etc.

Help is also needed the day of the pot pie sale. At 8 a.m., help will be needed to roll and cook pot pie. Help is also needed as the day goes on for other duties including filling the quarts and taking them to the cars, as well as clean up. If you are experienced, that is great; if not, we’ll provide training!

If you have any questions, or to volunteer to help, please call Kim Blyler at 570-716-5601 or email him at kim@4bellschurch.com.



CULC NEWS

Congregational Meeting

Council has set a Special Congregational Meeting to be held on **Sunday, October 8 after the 8:30 a.m.** worship service. Agenda items:

- Parking Lot Maintenance: Seal cracks and pavement, along with painting parking lines.
- Communion at the rail once a month

Event Help Needed

Help will be needed to serve food for the Clouser Family Reunion, scheduled for **Saturday, October 14**. Talk to Kim Blyler if you want more details or if you can help.



Indoor Yard Sale

An indoor yard sale benefiting our Parish youth and their upcoming trip to the ELCA youth gathering in New Orleans next year will take place on **Friday & Saturday, October 20 & 21**.

Questions? Contact Idella Zimmerman (570-765-1830) or Teresa Shuck (570-966-2053).

Harvest Home Sunday

Christ's United's Harvest Home Sunday is set for **October 22**. Please bring non-perishable food items that can be used for our Hope's Haven food ministry. Details on specific food items will be forthcoming. If you want to know more, talk to a council member.

Budget Planning

A Budget Planning Meeting will take place before the **November 21** Council Meeting, starting at **6:30 p.m.** Non-Council members are invited. Food will be provided.

Venturing Crew Plans

CULC sponsors a Venturing Crew group which consists of youth interested in outdoor activities. They are planning a "homeless campout" on our church grounds and will collect food donations for Hope's Haven on **Wednesday & Thursday, November 22 & 23** (Thanksgiving Eve & Day). More information can be secured from Joel Blyler (570-768-6582).

Sunday School Teacher

We are looking for at least one member willing to volunteer to teach/lead adult Sunday School after our worship services. If interested, please reach out to Pastor Curt. He has access to materials and videos.

CULC Money Counters

We are still in need of additional offering counters after worship services. If interested, contact Barry Spangler (570-966-0406).

Offering Envelopes

We now have "Homemade" offering envelopes available on the table outside of the office. If you cannot find a set made out for your family, talk to Kim Blyler (570-76-5601). You can also continue to make any 2023 donations with a check or in an envelope with your name on it, so we can give you credit for your offering gift.



HARVEST HOME AT CHRIST'S UNITED

The Harvest Home Celebration is a tradition that goes back many years. Years ago our congregation was made up largely of farmers who liked to gather in the fall for a big celebration to give thanks for their harvest. Today we don't have as many farmers, but still like to gather to give thanks for the harvest, for family & friends, and for God's many blessings.

We are continuing this tradition on **October 22**. On this special Sunday the sanctuary will be decorated with glories of the harvest. If you can provide any of the following items to help us do that, please have them here by **9:00 a.m. on October 21**.

Pumpkins - Gourds - Indian Corn - Corn Ears - Corn Stalks - Fresh Fruit - Fresh Vegetables - Fall Leaves - Fresh or Dried Flowers - Home Canned Items - Crates - Baskets

Be sure to have your name on all items so they can be returned to you. Also, if you would be available to lend a hand with decorating, your help would be exceedingly welcomed.



A collection of non-perishable food and monetary donations for Hope's Haven to help those in need will be received at this service. We have all been truly blessed and we ask that you share your blessings with those who are less fortunate by bringing a monetary donation and/or non-perishable food items along to worship on the 22nd. We will collect the donations during worship.

We invite you to join us for this Celebration of Thanks-giving as we give thanks for the blessings, gifts, and the harvest we have received this year from God.



FELC NEWS

**TIME FOR
SOMETHING NEW**

New Worship Setting Beginning in October

Beginning in October, we will be using Setting 10 in the ELW. Also, beginning in October, on the first Sunday of each month we'll be kneeling at the rail for communion and we will also kneel at the rail on Christmas Eve and Easter.

Christian Ed. Info

We will only have a SPECIAL Young Followers Church on the **SECOND Sunday of each month**, following the Children's Message. We'll be using the Sparks Story Bible that corresponds with the weekly scripture.

These monthly lessons will include Sparks Story Reading, Coloring Page, and a Craft.

- **October 8** Sparks Story: [Matthew 21:33-46](#) *The parable of the vineyard owner's son*
- **November 12** Sparks Story: [Matthew 25:1-13](#) *The story of the wise and foolish bridesmaids*
- **December 10** Sparks Story: [Mark 1:1-8](#) *John appears from the wilderness (Advent/Christmas special ideas, too)*
- **January 14** Sparks Story: [John 1:43-51](#) *The calling of the first disciples*
- **February 11** Sparks Story: [Mark 9:2-9](#) *Revelation of Christ as God's beloved Son*
- **March 10** Sparks Story: [John 3:14-21](#) *The lifting up of the Son of Man (Lenten/Easter special ideas, too)*
- **April 14** Sparks Story [Luke 24:36b-48](#) *Eating with the risen Christ*
- **May 12** Sparks Story [Acts 1:15-17, 21-26](#) *Matthias added to the apostles*
- **June, July, August – off**

Young Followers Church Volunteer Schedule

October 8 – Jamie Bartlett

November 12 – Kim Sawyer

December 10 – Ann Beckley
January 14 – Barb Randecker
February 11 – Nicole Klose
March 10 – Shirley Heasley
April 14 – Christian and Buffy Boyer
May 12 – Kortney McBryan

If you are unable to fulfill your month, please try to make an exchange with another month's volunteer. If that is not possible, contact one of the following substitutes: Sally Rothermel, Liz Loss, Sherri Neece, Mandy Rothermel, Libby Loss. If you are still unable to get a replacement, contact Ann Beckley.

Lesson plans will be emailed to you two weeks prior to your assigned month.

Buy the Books Program

The women's church group is distributing money again for the higher learning 'Buy the Books' program. If interested in receiving funds, please send a letter to the church in care of 'WELCA Jane Moore' by Oct. 31. The funds will be distributed for the semester starting in January. Please contact Jane Moore with any questions.

Altar Flowers

The cost of altar flowers is now \$50.00 for 2 vases instead of \$40.00.

Empty Coffee Cans Needed

We are in need of empty #1 coffee cans for altar flowers. You may place them on the pew in the office hallway.

Online Giving

First Evangelical Lutheran Church is excited to announce the introduction of an electronic option for making regular offerings. Contributions can now be debited automatically from your checking or savings account or processed using your credit or debit card. Our new electronic giving program offers convenience for you and provides donation consistency for our congregation.

Manage your giving online:

We are pleased to announce that you can now manage your giving online! Giving online is easy and allows you to set up automatic recurring

contributions and view your complete online giving history from anywhere you have access to the internet. To get started simply follow these steps:

1. Visit the website at www.felcmifflinburg.org
2. Click on the give button, then
3. Follow the onscreen instructions to create an online profile and to schedule your recurring contributions.

Vanco Mobile App:

You can also manage your online giving by using the Vanco Mobile App. Download the Vanco Mobile App on your smartphone and search for First Evangelical Lutheran Church in Mifflinburg, PA and follow the directions.

As you contemplate future contributions, please consider electronic giving. If you have any questions, please contact Pastor Curt or the church office (570-966-0266). We hope you enjoy this new way to contribute to our ministry!



Harvest Home at First Lutheran

It was decided by Altar Guild that Harvest Home will be celebrated in October, going forward. This year we will be celebrating it on **October 22**, with the food items to be donated to Hope's Haven. The following foods are needed:

Canned fruit (no applesauce cups)
Canned soup
Peanut butter

Canned tuna
Pancake mixes and syrup
Jelly

Food should be brought to the church and placed on the pew next to the pulpit door **no later than Friday, October 20 by noon**. The doors will be open on Friday, 8 am to 1pm.





Mums for Harvest Home

Mums will decorate the FELC sanctuary on Sunday, October 22 for Harvest Home. They may be picked up after the Sunday worship service. If you would like to remember or honor a loved one, please complete the order form and return it to the FELC office, with payment, by **Monday, October 2**. Colors available will be: yellow, orange, and burgundy and the cost is \$6.50 each. If you have any questions, please contact Sue Jows.



Order Form for Mums

\$6.50 each

_____ Yellow

_____ Orange

_____ Burgundy

In Honor of: _____

Remembered by: _____

In Memory of: _____

Remembered by: _____

Total plants ordered: _____

Total amount due: \$ _____



VETERAN'S DAY CEREMONY

UNION COUNTY WW 2 HONOR ROLL

MIFFLINBURG, PA

SATURDAY, NOVEMBER 4 , 2023 11 AM

SPEAKER : MISSY WEIDENSAUL

GOLD STAR FAMILIES

NAZARENE CHURCH SINGERS

SHIKELLAMY JROTC

UNION COUNTY 4-H CLUBS

ROSIE THE RIVETER

CHILDREN OF THE AMERICAN REVOLUTION

GIRL, CUB, AND BOY SCOUTS LEADING THE PLEDGE

IN CASE OF BAD WEATHER : NAZARENE CHURCH - 12 MARKET ST., MIFFLINBURG, PA

**TO PURCHASE A MEMORIAL BRICK OR MAKE A TAX DEDUCTIBLE DONATION TO HELP MAINTAIN THE MONUMENT:
UNION COUNTY VETERAN'S FOUNDATION, 916 WASHINGTON AVE., LEWISBURG, PA 17837**

mazeppa@ptd.net

570-713-8919

ONCE AGAIN, WE ARE INCLUDING A BENEFIT WITH OUR VETERAN'S DAY PROGRAM IN MIFFLINBURG. THE VETERANS' HOME IN HOLLIDAYSBURG HAS BECOME OUR PERMANENT PLACE TO HELP. THE WONDERFUL THING IS THAT 100 % OF WHAT IS DONATED, WHETHER IT BE MONEY OR GIFT CARDS, IS UTILIZED BY THE RESIDENTS.

WE ARE ACCEPTING MONEY DONATIONS, ALONG WITH GIFT CARDS FROM WEIS MARKETS, GIANT, AND WALMART. ALL 3 STORES ARE REPRESENTED IN THE HOLLIDAYSBURG AREA AND CAN BE USED THERE.

WE ARE ALSO ACCEPTING: NEW, WITH TAGS, SWEATPANTS AND TOPS, SIZE SMALL TO 3 X.

ANY DONATIONS CAN BE DROPPED OFF AT OUR VETERAN'S DAY CEREMONY IN MIFFLINBURG OR BY CONTACTING ME.

CHECKS CAN MADE OUT TO: HOLLIDAYSBURG VETERANS' HOME.
THIS IS A TAX-DEDUCTIBLE DONATION AND THEIR TAX NUMBER IS 23 - 6002830.

THESE VETERANS ALREADY DID THEIR PART TO ENSURE OUR FREEDOMS AND THE LEAST WE CAN DO IS SAY THANK YOU BY BRIGHTENING THEIR LIVES. WE ARE TRYING OUR BEST TO MAKE THIS A TRUE COMMUNITY EVENT WHERE WE NOT ONLY HONOR OUR HEROES, BUT DO SOMETHING TANGIBLE TO HELP THEM. MIFFLINBURG, WHERE EVERYDAY IS VETERAN'S DAY!

DOUG & TRACY WALTER – UNION COUNTY VETERAN'S FOUNDATION
916 WASHINGTON AVE., LEWISBURG, PA 17837
CELL: 570-713-8919 EMAIL: mazeppa@ptd.net

FACEBOOK: UNION COUNTY WW2 HONOR ROLL – MIFFLINBURG PA

FOR YOUR INFORMATION

Old Fashioned Hymn Sing at Messiah Lutheran

You are cordially invited to attend an "Old-Fashioned Hymn Sing" in the sanctuary of Messiah Lutheran Church, Market St., New Berlin on Saturday, October 14 at 7 pm. Music director, Frank Shue, will be leading us and will be joined in an organ/piano duet by Del Hart. Following the hymn sing, there will be refreshments--warm apple crisp and ice cream with cold and hot beverages including mulled apple cider. Please join us for a night of music and fellowship.

Weis/Wenger's Gift Cards Offer

Gift cards make wonderful gifts for college students, birthdays, weddings, ♥ day, holidays, birth of a new baby, a new neighbor....the list is endless....such a useful gift!

First Lutheran - offers cards in denominations of \$25, \$50 or \$100. Simply make checks payable to "First Lutheran Church" and use them as cash or the grateful recipient can do the same. Don Seebold will even deliver! Give him a call at 966-0727 or 412-1505.

YOU receive the full value of the card and then Weis gives 5% & Wenger's gives 10% of the purchase to the FELC mission fund!

Christ's United - Grocery cards can now be purchased from Idella Zimmerman. Available grocery cards in denominations of \$25 or \$50 will be for Weis Markets, L & L Marketplace, and Wenger's. If you would like to pay by check, it should be made payable to "Christ's United Lutheran Church" and put "Grocery cards" on the memo line.



Daylight Saving Time Ends on November 5. Don't forget to turn your clocks back 1 hour before retiring on Saturday, November 4.



Information for the November newsletter is due in the church offices by October 20.



VOLUNTEERS

CULC

Date:	Greeters:	Lay Reader:	Communion Assistants:
10/01	June Wenrich	Lisa Lapp	Dianne Shuck
10/08	Kim & Sue Blyler	Glenn Spangler	Dianne Shuck
10/15	Gina Zimmerman	Greg Shuck	Greg Shuck
10/22	Linda Smith	Maurice Clouser	Judy Moyer
10/29	Terry/Sally Kline, Darlene Ulrich	Barry Spangler	Barry Spangler

Sound System: Barry Spangler

Altar Guild: June Wenrich

Ushers: Greg Shuck & Linda Smith

REMINDER! You are responsible for finding a substitute if you are unable to be here when scheduled. Altar Guild Members, Sound System Operators & Ushers are responsible for any special services scheduled during the month.



FELC

Date:	Lay Reader:	Ushers:	Young Followers:
10/01	Karen Boyer	Eric & Gwen Hull	
10/08	Andy Long	Shirley Heasley/Marianne Motto	Jamie Bartlett
10/15	Sherri Neece	Nicole Gessner-Klose/Sherri Neece	
10/22	Shirley Heasley	Linda Lewis/Barb Randecker	
10/29	Linda Skinner	Dewey Reed/Jim Schwartz	

Acolytes:

10/01 – Ava McBryan	10/08 – Hannah Boyer	10/15 – Kendall Neece
10/22 – Erica Boyer	10/29 – Brynn Umholtz	

Chief Usher: Sue Jows/Jamie Bartlett

Money Counters: Ann Beckley/Shirley Heasley **Altar Guild:** Jamie Bartlett/Barb Randecker

Volunteers, Please Note: If you are scheduled to help with the service and are unable to fulfill your responsibility, please contact the head usher. If you are scheduled to count money and are unable to do so, please find a substitute.



CHRIST'S UNITED

Winifred Aikey
Paul Brann
Phil Crosbie
Roger Dunkle
Darlene Endy
Rozelle DeDe Ensminger
Amy Evers
Annette Feltman
Gary Gemberling
Pearl Gemberling
George (Mick) Guffey
Gary & Janet Hackenberg
Scott Hummel
John Keister
Roy Laudermilch
John Morrison
Harry Moyer
Dave Oberlin
Louise Ritter
Sam & Ethel Schnure
Lee & Kathy Spangler
Tom Watters
Jessica Wheeler
Glenn Wiand

The Shut-Ins:

Winnie Aikey, Florence Boop
Betty Goss, Helen Pirone, Dottie Rathfon.

Also:

The family of Joslyn Flickinger

In an effort to keep the prayer list current, Christ's United will clear their current list on a quarterly basis. **A new list will begin in** January, April, July, and **October**. **If you want to continue an existing prayer request or have a new prayer concern, please contact Margie.**

FIRST LUTHERAN

Cathy Hower Brungard
Amanda Galer
Harvey Ilgen
Ed Libhart
Logan Roush
Ken & Pat Smith

The Shut-Ins:

Mary Lib Dunkle
Lois Elliott
Carol Mensch
Doris Moll
Ethel Musser
Dotty Seebold
James Shipton
Trena Zeller

The Troops:

Dylan Harvey
Thaddeus Miller
Zachary Miller



CULC

10/01 David Swartz
10/02 Kris Ruhl
10/06 Michael Christy
10/07 Justin Marshall
Bryanna (Yost) VanHoutz
10/11 Brynn Ruhl
Richard Troutman
10/13 Marjorie Dunkle
10/14 Idella Zimmerman
10/15 Nancy Klinepeter
10/17 Sherry Zimmerman
10/20 Dryden Yost
10/22 Barry Spangler
10/24 Andre Roupp
10/26 Rebecca Forcheskie
10/29 Pearl Gemberling



FELC

10/01 Sarah Alexander
10/03 Arlene Behrent
Jennifer Galer
10/08 Judy Shirk
10/09 Quinton Bartlett
10/10 Emil Stenger, Jr.
10/11 Don Seebold II
10/12 Samantha Orren
10/13 Grace Bollinger
10/14 Victoria Harvey
Conner Neece
Paige Uehling
10/16 Barb Reed, Mary Wehr
10/17 Ava McBryan
10/19 Doris Moll
10/21 Kendall Neece
10/22 Colten Page
Shayne Reed
10/24 Christian Boyer
Gloria Mincemoyer
10/25 Linda Dale
Gregory Swenson
10/26 Cathy Brungard
10/27 Lois Elliott
10/30 Karen Libhart



CULC

- 10/10 Paul & Sherri Klauger (1975)
- 10/11 Eugene & Katherine Hassinger (1959)
- 10/16 Jim & Karen Zimmerman (1976)
- 10/20 David & Dayna Bickhart (1979)
- 10/21 Tom & Judy Mecouch (1972)
- 10/27 Justin & Jodi Marshall (2007)



FELC

- 10/01 Bob & Karen Musser (40 yrs.)
- 10/12 Jace & Carla Watson (34 yrs.)
- 10/13 Tom & Shelly Orren (33 yrs.)
- 10/15 Linn & Carol Mensch (68 yrs.)
- 10/21 Michael & Tracy Mensch (34 yrs.)
- 10/23 Frederick & Linda Dale (52 yrs.)
- 10/28 Dale & Sybil Spotts (57 yrs.)



355 Mt. Luther Lane, Mifflinburg, PA 17844
Telephone (570) 922-1587 Fax (570) 922-1118
E-mail: cml@campmountluther.org

Young Adult Fellowship

Camp Mount Luther's Young Adult Fellowship meets via Zoom on the last Wednesday of every month. On **October 25**, we will meet at **8:15 p.m.** for check-ins and Bible study. If you consider yourself a young adult, you can join us! Questions or want the link? Email jim@campmountluther.org.



SYNOD NEWS

July 26-20, 2024: ELCA Youth Gathering "Created to Be"

The 2024 ELCA Youth Gathering is being held in New Orleans, Louisiana on July 16-20, 2024. Every three years, thousands of high school youth and their adult leaders from across the ELCA gather for a week of faith formation and fellowship known as the ELCA Youth Gathering. The 2024 Gathering theme is "Created to Be" which is centered around Psalm 139 with emphasis on verse 14, "I praise you because I am fearfully and wonderfully made. Students must be in 8th – 11th grade to attend. Contact Pastor Curt if you are interested.

BUFFALO VALLEY LUTHERAN PARISH

The Rev Curt Wingert, Pastor

Pastor Curt's cell phone: 1-814-876-0974

Pastor Curt's e-mail: pastorbuffalovalleyparish@gmail.com

Parish Council Members: Shirley Heasley, Sue Jows, Jennifer Keister,
Terry Kline, Kim Sawyer, Barry Spangler

CHRIST'S UNITED LUTHERAN CHURCH
13765 Old Turnpike Rd., Millmont, PA 17845
570-922-1860

CULC e-mail: culc@4bellschurch.com
CULC Website: www.4bellschurch.com
CULC Facebook:
<https://www.facebook.com/4bellchurch>

OFFICE HOURS:

Monday-Thursday – 9:00 a.m.-2:30 p.m.

STAFF MEMBERS

The Members of the Congregation,

The Ministers

Matthew Wagner, Organist

Diane Valentine & Karen

Zimmerman, Pianists

David Swartz & Barry Spangler,

Digital Music Arrangers

Loretta Martin, Custodian

Margie Dunkle, Secretary/Asst. Tr.

Dianne Shuck, Treasurer

Janet Hackenberg, Asst. Treasurer

Tammy Boop, Financial Recording
Secretary

COUNCIL MEMBERS

Joel Blyler, Worship & Music

Kim Blyler, Facilities & Administration

Sue Blyler, Eucharist/Visitation

Bev Catherman, Eucharist/Visitation

Joe Dressler

Jennifer Keister, President, Youth

Terry Kline

Teresa Shuck, Inreach/Outreach

Barry Spangler, Council Secretary, W&M

Lee Spangler, V Pres, Christian Education

Idella Zimmerman, Eucharist/Visitation

FIRST EVANGELICAL LUTHERAN CHURCH
404 Market St., Mifflinburg, PA 17844
570-966-0266

FELC e-mail: felcmifflinburg@gmail.com
FELC Website: felcmifflinburg.org
FELC Facebook: First Evangelical
Lutheran Church Mifflinburg Pa

OFFICE HOURS:

Monday, Tuesday, Thursday –
9:00 a.m. - 2:00 p.m.

STAFF MEMBERS

Sue Nentwig, Church Secretary

Katiann Lloyd, Financial Secretary

Diane Scott, Director of Music

Hank Dorman, Sexton

Carrie Lasoski, Housekeeping

COUNCIL MEMBERS

Jeff Mensch, Council President

Kim Sauers, Council Vice President

Linda Lewis, Secretary

Gloria Mincemoyer, Treasurer

Jamie Bartlett, Council

Christian Boyer, Council

Shirley Heasley, Council

Sue Jows, Council

Jane Moore, Council

Marianne Motto, Council

Don Seebold II, Council



October 2023

Sunday	Monday	Tuesday	Wednesday	Thursday	Friday	Saturday
1 Blanket Sunday 8:30 Worship-CULC 9:30 Koinonia Kafe-CULC 9:30 Sunday School-CULC 10:30 Worship-FELC	2 Mum orders due-FELC 1:30 Parish Bible Study-FELC	3 6:30 Scouts-FELC	4 10:00 Hope's Haven-CULC 6:30 Council-FELC No Choir-FELC	5 1:00 WELCA-FELC	6	7 11-12:30 Community Meal-FELC
8 8:30 Worship-CULC 9:30 Congregational Mtg.-CULC 9:30 Sunday School-CULC 10:30 Worship-FELC 1:00 Small FH Reserved-CULC	9 1:30 Parish Bible Study-FELC	10 6:30 Scouts-FELC	11 10:00 Hope's Haven-CULC 6:30 Chancel Choir-FELC	12	13	14 Fellowship Hall Reserved-CULC
15 8:30 Worship-CULC 9:30 Sunday School-CULC 10:30 Worship-FELC	16 1:30 Parish Bible Study-FELC	17 6:30 Scouts-FELC 7:00 Council-CULC	18 10:00 Hope's Haven-CULC 6:30 Chime Choir-FELC	19 TBA – Yard Sale Set Up-CULC	20 TBA – Yard Sale Set Up-CULC November Newsletter Articles Due	21 WELCA Retreat at CML TBA – Yard Sale-CULC
22 8:30 Harvest Home Worship-CULC 9:30 Sunday School-CULC 10:30 Harvest Home Worship-FELC	23 1:30 Parish Bible Study-FELC	24 6:30 Scouts-FELC 6:30 Council-Messiah	25 10:00 Hope's Haven-CULC 6:30 Chancel Choir-FELC	26	27	28
29 Reformation 8:30 Worship-CULC 9:30 Sunday School-CULC 10:30 Worship-FELC 1:00 Senior Dinner-CULC	30 1:30 Parish Bible Study-FELC	31 3-7:00 Mobile Health Unit-FELC 6:30 Scouts-FELC				

